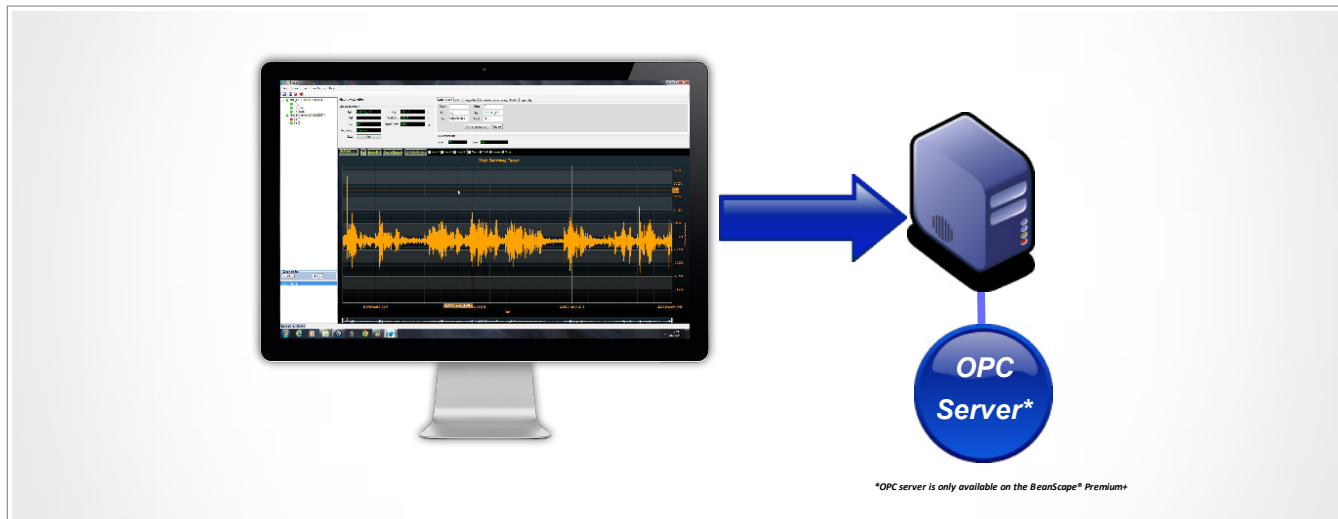


REAL TIME WIRELESS SENSOR NETWORKS (WSN) SUPERVISION & CONTROL MONITOR

//BEANSCAPE SOFTWARE



FEATURED VIDEO



Click here to see the BeanScape video



Click here to see the tutorial video

USER MANUAL



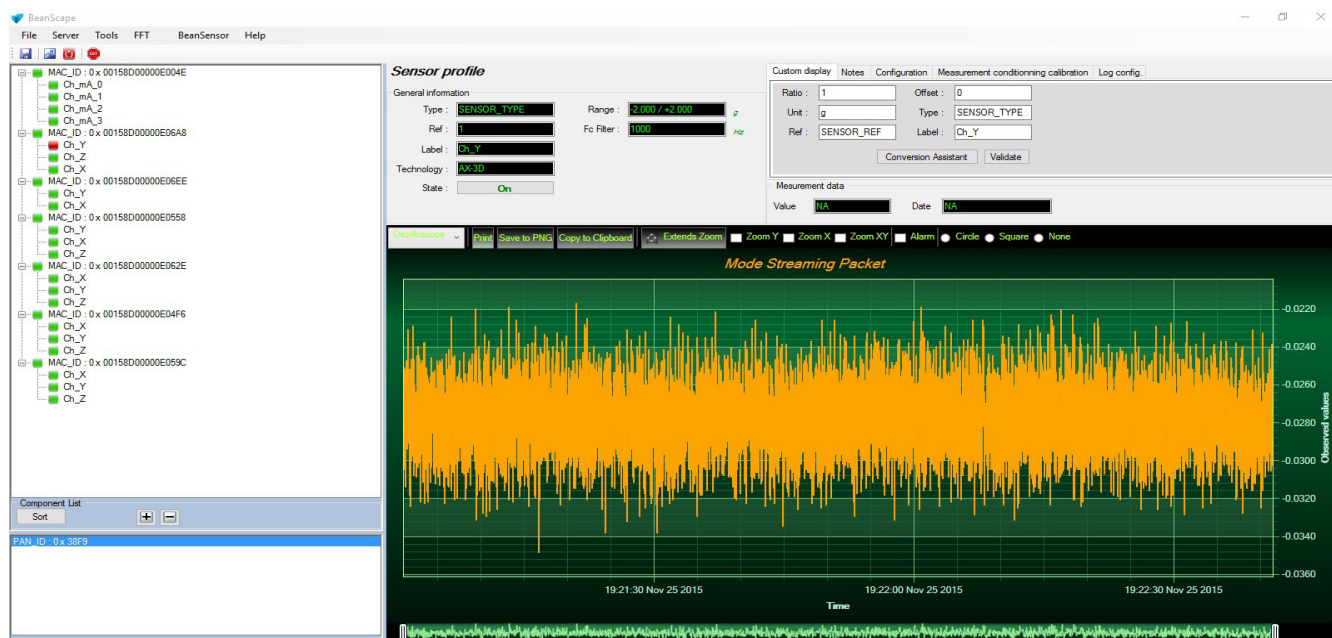
[BeanScape® user manual](#)

//MAIN FEATURES



- Server entirely dedicated to the monitoring of Beanair® WSN
- Fully integrated WSN maintenance and installation tool
- User friendly and highly adaptable to user's environment
- Highly intuitive and easy to use GUI (Graphical User Interface)
- Real time integrated database
- Simultaneous multi network handling (Multi clients/Server)
- Highly customizable data panel board
- Several versions:
 - **BeanScape® Manager** (cost free)
 - **BeanScape® Basic**
 - **BeanScape® Premium** : *manages several WSN on the same computer*
 - **BeanScape® Premium+** : *Multi WSN and *.NET OPC server allowing real time access from your IT system to the BeanScape®*

//BEANSCAPE SOFTWARE



//A CORE FULLY DEDICATED TO THE WSN SUPERVISION

- Multi client TCP/IP server, heart of the **BeanScape®** designed to connect to one or multiple (add-on : see **BeanScape® Premium**, page 3) **BeanGateway®**.
- Highly scalable and adaptable making the use of the **BeanScape®** optimal.

//REAL TIME & FULLY INTEGRATED DATA BASE & DATA BACKUP

The real time database designed by **BeanAir®** stores all real time Beanair® data with only little memory footprint :

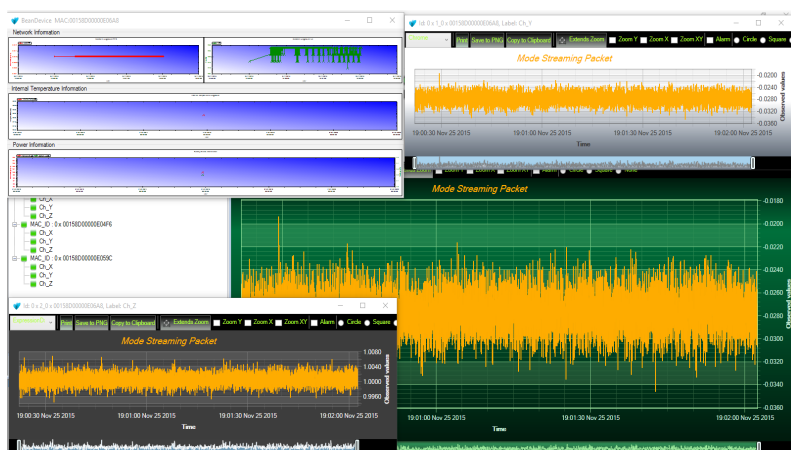
- No installation is needed
- Data backup (activable/disactivable functionality).
- Easily exportable data (Access, Excel, Matlab, Labview...).

//SOPHISTICATED AND INTUITIVE GUI

The **BeanScape®** offers a complete and intuitive real time view of the WSN (tree stages representation) :

- Detailed and efficient viewset representing different alarm levels (4 different customizable alarm thresholds high/low)
- Automatic alarm diagnostics generated by **BeanAir®**'s expert system
- Highly customizable GUI allowing the user to name and rename components and to associate metrics (in case of sensors)
- Highly configurable data panel and multi-chart board.

//ACTIVE SUPERVISION & MONITORING SYSTEM



The **BeanScape®** is an active monitoring system which allows a remote configuration of each and every component part of the wireless network :

- Data acquisition configuration (Data acquisition mode, sampling frequency and duration, sleeping mode cycle).
- Alarm notification by email when a measurement threshold is reached
- Power supply management
- Switch to manual or automatic radio channel with **«Energy Scan»** functionality (automatic setting to the best available radio channel)
- Sensor calibration interface
- Radio transmission configuration
- Global or partial network maintenance
- Visualization of all the information relative to the wireless network performance: radio signal quality, PER (Packet Error Rate)
- Battery information (battery power internal temperature, shortcut...)
- FFT (Fast Fourier transform) waveform analysis module

//BEANSCAPE MANAGER : COST-FREE & ECO-FRIENDLY WSN CONFIGURATOR

This new software version comes with the following features:

- Fully integrated Wireless Sensor Networks Maintenance and Installation Tool
- User Friendly and highly adaptable to user's environment
- Real-time integrated Database
- ModBus TCP/RS232/RS485 configurator (available only for the BeanGateway® ModBus version)
- Data logging on CSV file

The BeanScape® Manager is free of cost, and already includes 1 month of technical support.

User looking for real-time data visualization, multi-WSN supervision software, longer technical support and a full compatibility with a third-party supervision software, can migrate to the BeanScape® Basic, Premium and Premium+ versions.

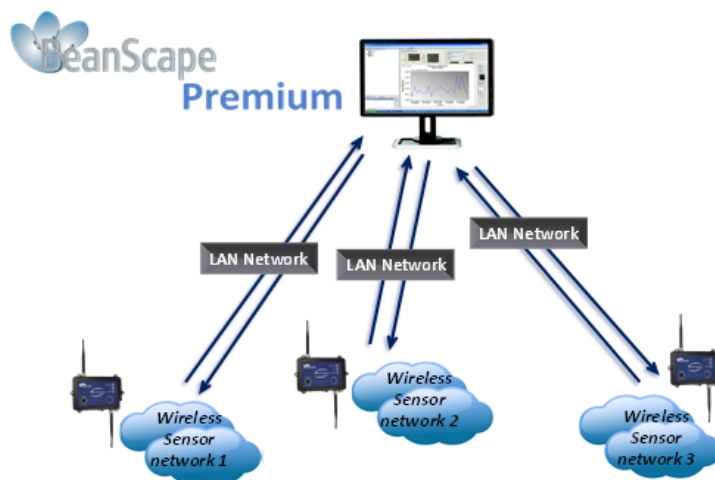
//BEANSCAPE PREMIUM ADD-ON : CONNECT SEVERAL WSN TO THE SAME COMPUTER



With the **BeanScape® Premium** you will be able to connect as many BeanGateway® as your computer can handle at the same time.

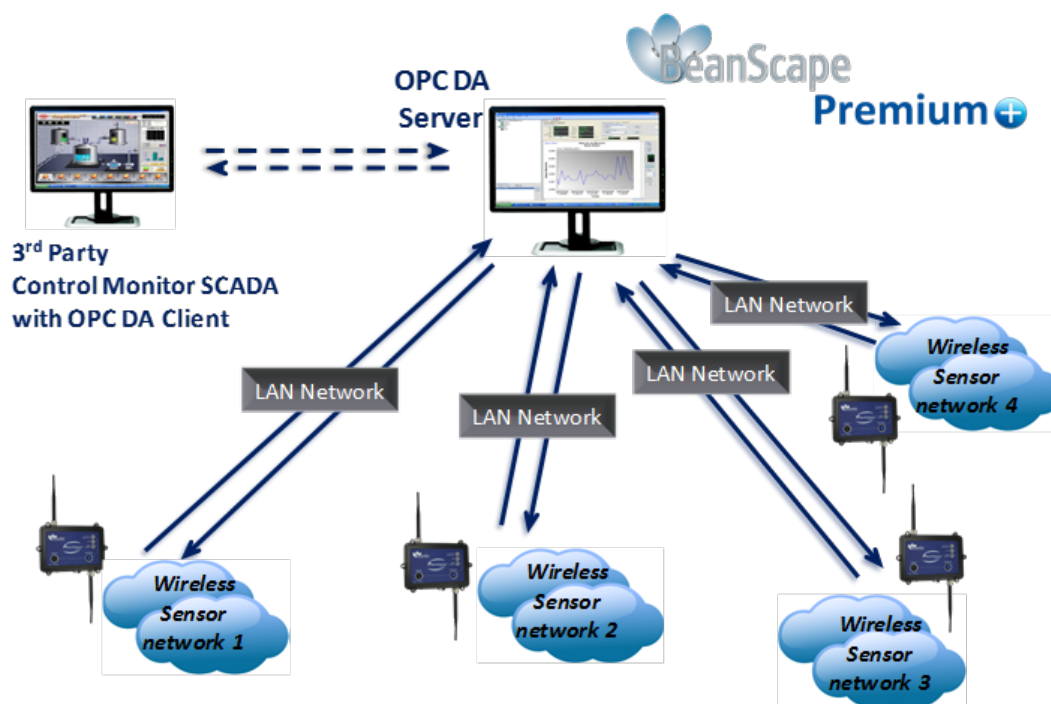
A BeanGateway® can manage up to 50 BeanDevice®, depending on the product range and measurement frequency. BeanScape® Premium allows you to cover a large field with a single PC, software and gateway.

Multi client TCP/IP server included in **BeanScape® Premium** add-on was designed to offer you the best performances with one or more BeanGateway®.


//BEANSCAPE PREMIUM+ : AN OPC SERVER TO OPEN YOUR WSN TO YOUR OWN APPLICATION






The **BeanScape® Premium+** integrates an OPC DA server (Data Access). OPC DA is particularly well suited for real time measurement and data sharing. Each data/measurement can be associated to a tag or its attributes and shared with one or many OPC clients.

Therefore, the **BeanScape® Premium+** opens up to many third party applications (SCADA, web portals etc..). The BeanScape® OPC is DA 2, DA 2.5 and DA 3 compliant and allows two different presentations. The first is a compact presentation of the sensor tree, presenting all the secondary attributes under the form of attributes. The second is an extended presentation of the sensor tree where each secondary attribute is presented by an OPC item/tag rather than an attribute.



//SOPHISTICATED AND INTUITIVE GUI

Main features

	 BeanScape® Manager	 BeanScape® Basic	 BeanScape® Premium	 BeanScape® Premium+
Number of handled wireless sensor networks	1	1	Unlimited	Unlimited
Period technical assistance (e-mail)	1 Month	3 Months	6 Months	6 Months
OPC Server DA	No	No	No	Yes
Number of managed Bean-Device®	45	45	Unlimited	Unlimited
Real time data base	Yes	Yes	Yes	Yes
GUI (Graphical User Interface)	No	Yes	Yes	Yes
Alarm notification by email	No	Yes	Yes	Yes
FFT and PPV module	No	Yes	Yes	Yes
Free of cost ?	Yes	No	No	No

//MINIMUM SYSTEM REQUIREMENTS

- 2.33GHz or faster x86-compatible processor
- Microsoft® Windows® XP (32-bit), Windows Server® 2003 (32-bit), Windows Server 2008 (32-bit), Windows Vista® (32-bit), Windows 7 (32-bit and 64-bit), Windows 8, Windows 8.1 and Windows 10
- 2GB of RAM
- 5 GB of disk space
- 128MB of graphics memory

Product specifications are subject to change without notice. Contact Beanair for latest specifications.

//CONTACT US

FOR MORE INFORMATIONS :

sales@beanair.com

Visit our website : **www.beanair.com**

Visit our blog : **www.industrial-wsn.com**

OUR YOUTUBE CHANNEL :



Watch our featured videos on Youtube

VISIT OUR WEBSITES


VISIT US !